



## **Machine Specific – Energy Control and Power Lockout Compliance Audit**

Premier Factory Safety, LLC (PFS) utilizes its highly trained technicians/engineers to conduct compliance audits of equipment and processes. PFS will audit each piece of equipment and record the data using state of the art PC tablet technology. Existing procedures and placards will be compared to your company and/or OSHA regulatory requirements. Following the audit you will be provided a compliance report detailing the findings of each piece of equipment and process. Additionally, Premier Factory Safety will provide a quotation for correcting any non-compliance findings, along with tools that are available to allow you to maintain continuous compliance moving forward.

### **Scope Of The Audit**

- Review all plant and facility equipment for lockout
- Identify all equipment that requires lockout
- Identify plant process for new equipment lines
- Identify plant process for equipment changes
- Identify lockout team members
- Supply needs analysis
  - Plant equipment list
  - Equipment with no lockout plaques
  - Equipment with lockout plaques that comply
  - Equipment with lockout plaques that DO NOT comply
  - Report on what is required and what is needed

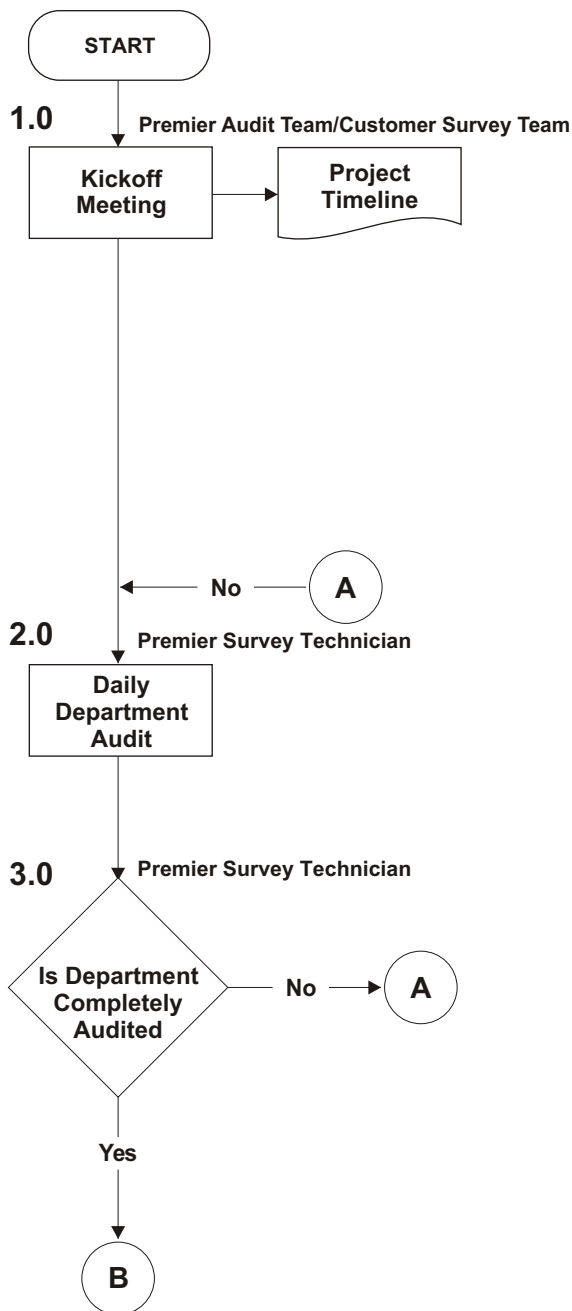
### **Sample Attachments:**

Audit Flow Chart  
Audit Report



# Machine Specific Lockout Audit for Continuous Compliance

Event	Description
-------	-------------



**1.0 Kickoff Meeting**

- ▶ Initial meeting will be conducted at Plant Location. Plant Safety Team and required Premier employees will be in attendance.
- ▶ Agenda items will be: contact names at plant, project timeline, entrance passes for Premier Survey Technicians, plant layout drawing for production/facilities, high priority departments, required PPE, identification of any new equipment coming into plant, review of Customers Lockout Standard, compliant notification process (red/green dots), and plant walk through.
- ▶ Project timeline will be based on facility type/size and Premier historical data.

**2.0 Daily Department Audit**

- ▶ Premier Survey Technicians will audit plant based on the approved timeline.
- ▶ Premier Survey Technician will use a tablet PC to gather all audit information.
- ▶ Premier Survey Technician will sync on a daily basis and download all audit information through the web to Premier’s central database.

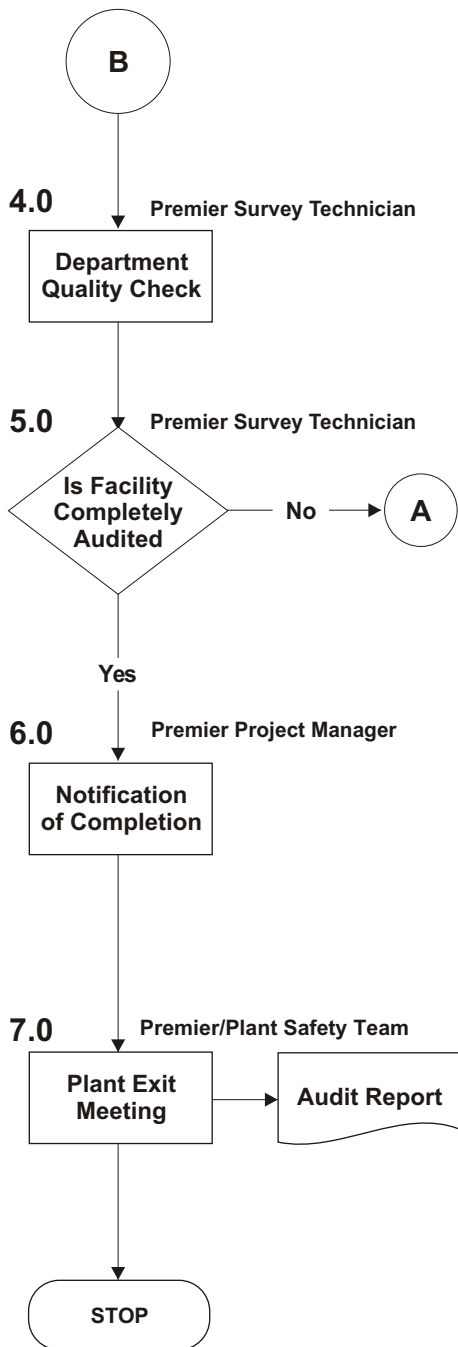
**3.0 Department Audit Complete**

- ▶ Premier Survey Technician will audit the department until all equipment has been audited.



# Machine Specific Lockout Audit for Continuous Compliance

Event	Description
-------	-------------



**4.0 Department Quality Check**

- ▶ Premier Survey Technician will review department to assure that all equipment has been audited.

**5.0 Facility Completely Audited**

- ▶ Premier Survey Technician will audit the next department once the previous department has been completely audited.
- ▶ When all departments have been audited and checked, the closing process will begin.

**6.0 Completion Notification**

- ▶ Plant Safety Team will be notified that the facility has been completely audited.
- ▶ Premier project manager will generate the audit report.
- ▶ Plant Safety Team will be notified that a closing meeting will be scheduled to review audit report.

**7.0 Exit Review Meeting**

- ▶ Premier will schedule meeting with plant safety team.
- ▶ At this time the Audit report will be reviewed. Solutions to plant noncompliance's will be provided.



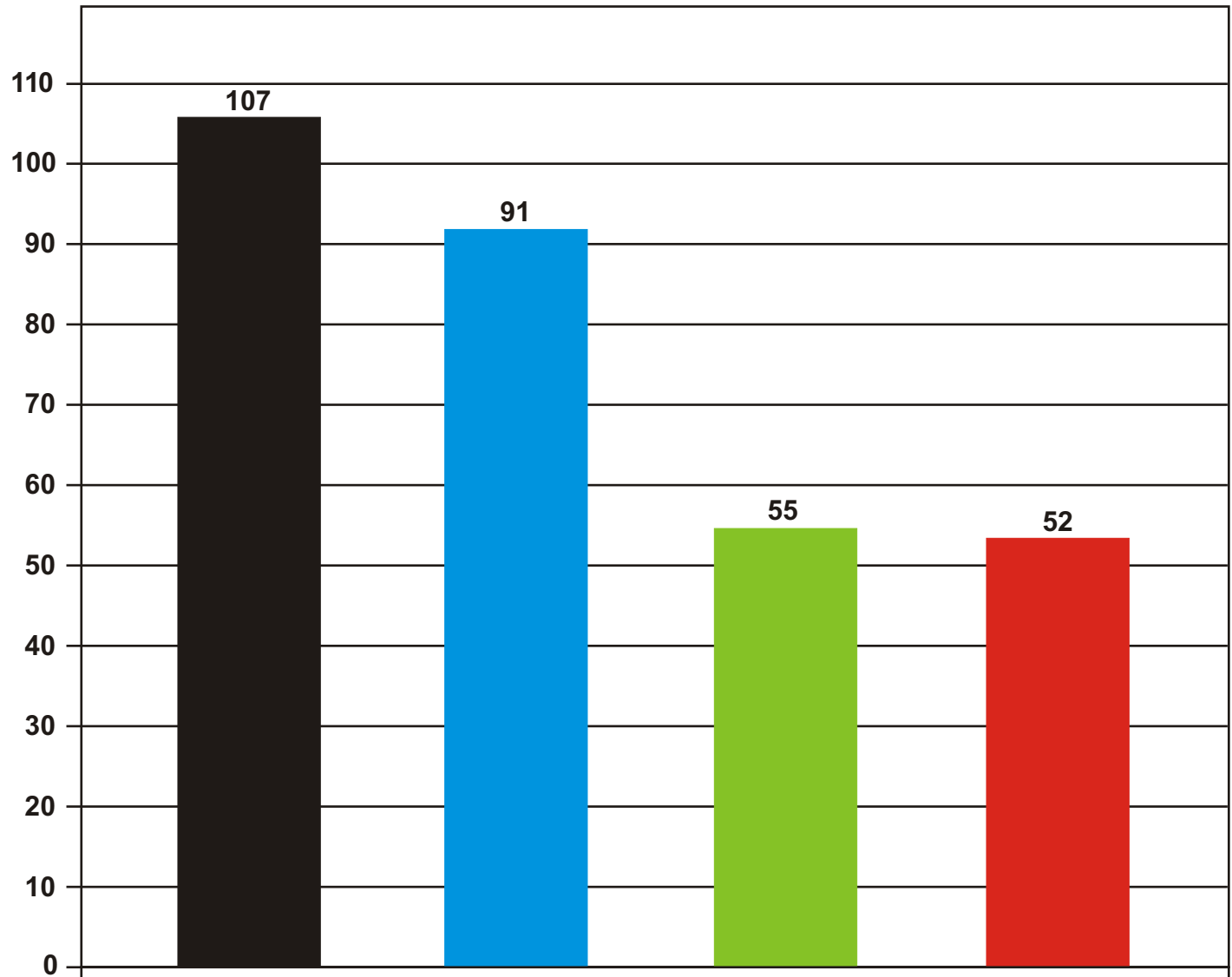
**Machine Specific Energy Control and Power  
Lockout  
Compliance Audit Report  
Client**

**Plant and Individual Department Compliance  
Breakouts**

**Provided By:  
Premier Factory Safety, LLC**

**Date**

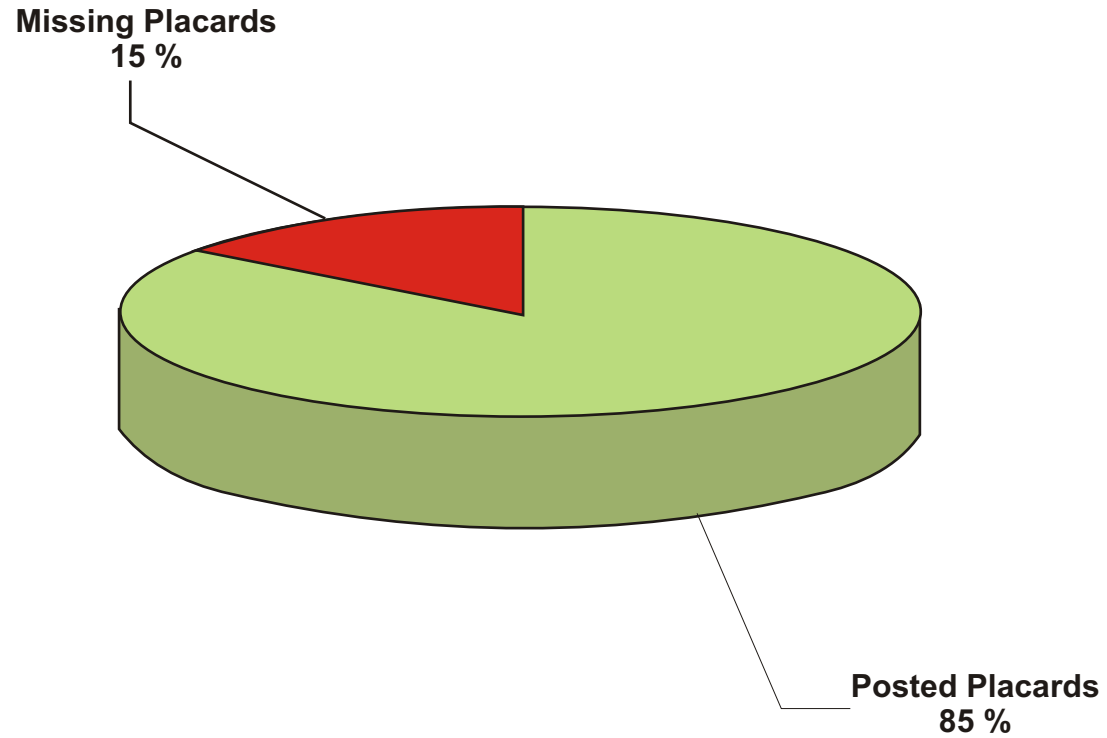
### Audit Summary Data



Client

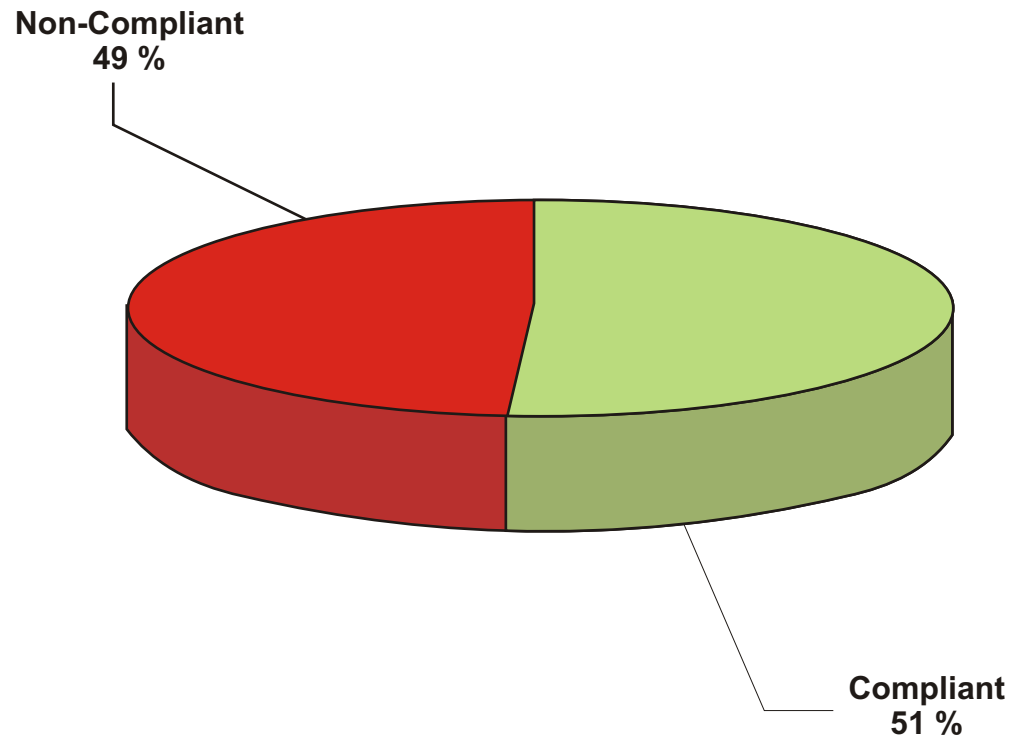
■ # of Machines	107
■ # of Placards Posted	91
■ # of Compliant Machines	55
■ # of Non-Compliant Machines	52

# Percentage of Posted Placards



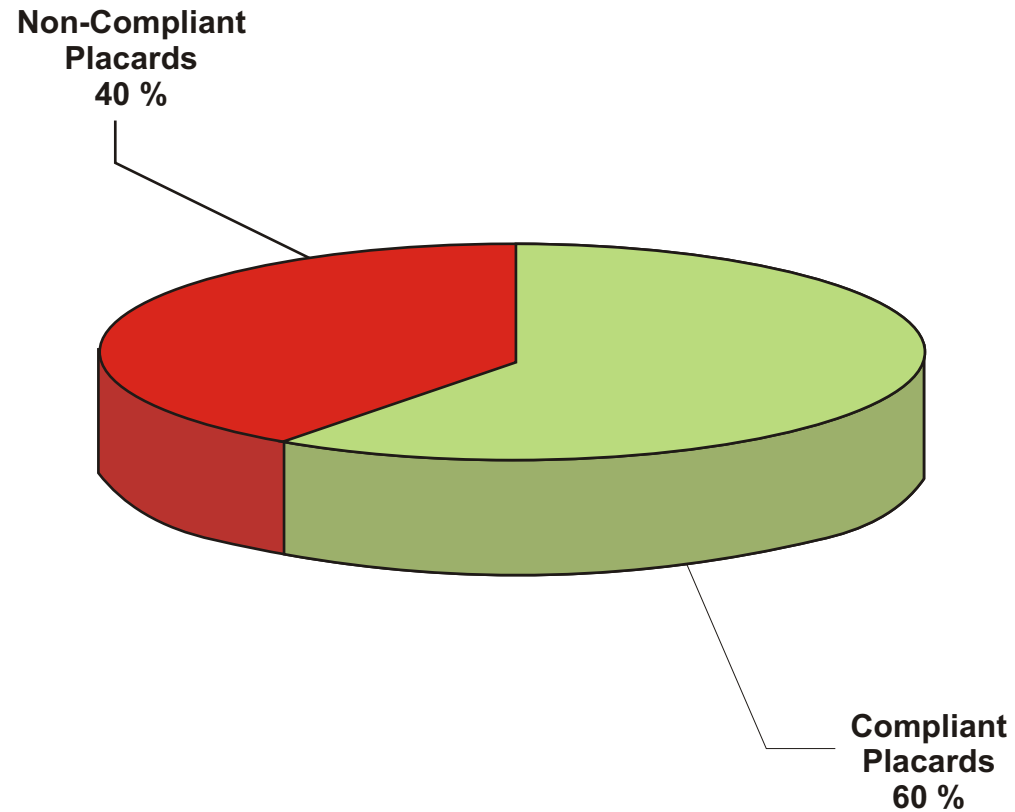
**Total Equipment - 107**  
**Posted Placards - 91**  
**Missing Placards - 16**

# Compliance Percentage of Equipment



**Total Equipment - 107**  
**Compliant - 55**  
**Non-Compliant - 52**

# Compliance Percentage of Posted Placards



**Total Placards - 91**  
**Compliant Placards - 55**  
**Non-Compliant Placards - 36**



**SAMPLE COMPLIANCE DATA REPORT**

Department	Equipment ID	Equipment Name	Column	Placard Posted	Placard Compliant	Comments	Tags	Duplicates
#9820		Glass Unloader 2	In Rm at Q51	X		Elec not ident on graphic		
#9820	GH-0030	Glass Unloader 1	In Rm at Q51	X		Elec not ident on graphic		
#9820	GH-0027	AHU	In Rm at Q51	X		Water valve not ident on graphic	3	
#9820	GH-0020	Gas Hearth Furnace	In Rm at Q39	X	X		10	1
#9820	GH-0053	Natural Gas Pump	Balcony	X	X	Gas tag missing on machine	3	
#9820	GH-0054	Natural Gas Pump	Balcony	X	X	Gas tag missing on machine	3	
#9820	RH10041 West	UV Liaght West Line	RH Print Rm	X		Air icon incorrect, hydraulic valve & elec not ident on graphic	8	
#9820	RH10015 West	Print Mach West Line	RH Print Rm	X		Air icon incorrect	22	
#9820	RH10041 East	UV Light East Line	RH Print Rm	X		Air icon incorrect, hydraulic valve & elec not ident on graphic	8	
#9820	RH10015 East	Print Mach East	RH Print Rm	X		Air icon incorrect	22	
#9820		RH Furnace	Control Rm	X	X	E-stop & water tags missing on machine	3	
#9820	RH30167	Cooling Fan	Blower Rm	X	X		5	
#9820	RH31066	Cooling Fan	Blower Rm	X	X		5	
#9820	RH31065	Cooling Fan	Blower Rm	X	X		5	
#9820	RH60001	Bystronic PL-Line 1LC1	D1.157	X	X	Air, E-stop & elec tag missing on machine	9	
#9820	RH60008	Bystronic PL-Line 1LC2	D1.155	X	X	Air, safety gate plug & elec tag missing on machine	6	
#9820	RH60022	Bystronic PL-Line 1LC3	D1.155	X	X	Air, safety gate plug, water, elec & E-stop tags missing on machine	28	
#9820	RH60026	Bystronic PL-Line 1LC4	D1.155	X	X	Air, safety gate plug, water, elec & E-stop tags missing on machine	14	
#9820	RH60033	Bystronic PL-Line 1LC5	D1.153	X	X	Air, safety gate plug, water, elec & E-stop tags missing on machine	14	
#9820	RH60039	Bystronic PL-Line 1LC6	D1.153	X	X	Air, safety gate plug, water, elec & E-stop tags missing on machine	14	
#9820	RH60059	RH 6 Line Drill Mach	F1.551	X	X	Air, safety gate plug, water, elec & E-stop tags missing on machine	30	
#9820	RH60044	Micro Seperator	F1.551	X		Water valve, coolant & chem not ident on graphic	34	
#9820	RH60058	Line 6 Washer	F1.551	X		E-stop, coolant, water & steam valve not ident on graphic		
#9820	RH60069	RH6 Robot	J151	X	X		2	
#9820	RH60067	M+R Printer	RH6 Print Rm	X	X		9	
#9820	RH60068	RH6 Auto Loader	RH6 Print Rm	X	X		33	
#9820	AAA075942	UV Sta	RH6 Print Rm	X	X		2	
#9820	AAA062082	6 Cyl Bender Conv	Furnace 6 Control Rm	X	X	E-stop, elec & air tags missing on machine	5	
#9820		6 Cyl Bender Conv	Furnace 6 Control Rm	X	X	E-stop, elec & air tags missing on machine	13	
#9820		6 Furnace Conv	Furnace 6 Control Rm	X	X	Elec tag missing on mach	10	
#9820		6 Lower Quench Fan	6 Blower Rm	X	X	Elec, air & E-stop tags missing on machine	6	
#9820		6 Upper Quench Fan	6 Blower Rm			No placard, needs survey	6	
#9820		Lower Cooler Fan	6 Blower Rm	X	X	Elec tag missing on mach	1	
#9820		Upper Cooler Fan	6 Blower Rm	X	X	Elec tag missing on mach	1	
#9820	102283	AC unit 68	K55	X		Water valve not ident on graphic	4	
#9820	R1150118-1	Roler Hearth 5 Robot	F1.535	X	X	Elec tag missin on machine	17	3
#9820		RH5 Furnace	F1.535			No placard, needs survey	35	2
#9820	RH50153	Roller Hearth #5 Zone 2	J137	X	X	E-stop, safety gate plug, elec & air tags missing on machine	41	3
#9820		WJ-Line Accumulator	F1.537	X		Safety gate plug & E-stop tags missing on machine, air icon incorrect	17	1
#9820	RH5-0067	UV Line	RH5 Print Rm			No placard, needs survey	8	
#9820	RH5-0080	Printer Sta 1	RH5 Print Rm	X		E-stop & elec not ident on graphic	8	
#9820	RH5-0081	RH 5 Furnace Load	RH5 Print Rm			No placard, needs survey	23	1
#9820	RH5-0082	Printer Sta 2	RH5 Print Rm			E-stop & elec not ident on graphic	8	
#9820	RH5-0055	RH5 Washer	F1.545			No placard, needs survey	34	
#9820	RH5-0056	RH5 Drill Mach	F1.543	X	X	Air, elec, E-stop, Safety gate plug & water tags missing on machine	18	3
#9820	RH5-0041	Micro Seperator	F1.545	X		Coolant & chem not ident on graphic	34	2
#9820	RH5-0001	WJ-Line 1LC1	D1.149	X	X	Air, elec & E-stop tags missing on machine	10	
#9820	RH5-0008	WJ-Line 1LC2	D1.147A	X	X	Safety gate plug, elec & air tags missing on machine	7	1
#9820	RH5-0019	WJ-Line 1LC3	D1.147A	X	X	Safety gate plug, elec, water & air tags missing on machine	28	1
#9820	27241	Coolant Tank	D1.549			No placard, needs survey	9	
#9820	RH6-0064	RH6 Washer	F1.549	X		E-stop, chem & elec not ident on graphic	28	